



10mg/Vials,10vails /Box Peptide HKPao CAS 859216-15-2 C111H206N36O28S2

Our Product Introduction

for more products please visit us on peptide-powder.com

Basic Information

- Place of Origin: China
- Brand Name: Hongbaiyi
- Certification: COA, HPLC MR
- Model Number: HBY-HKPao
- Minimum Order Quantity: 5 boxes
- Price: negotiable
- Packaging Details: 10mg/vial, 10vials/box
- Delivery Time: 3-5 work days after your payment
- Payment Terms: MoneyGram, Western Union, T/T
- Supply Ability: 20,000 boxes/month

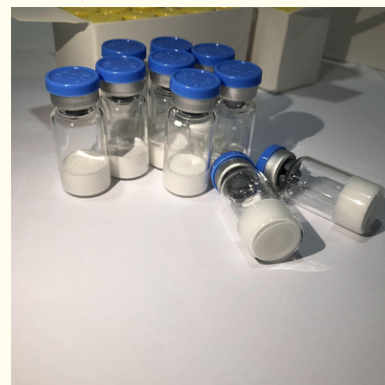


HK Pao



Product Specification

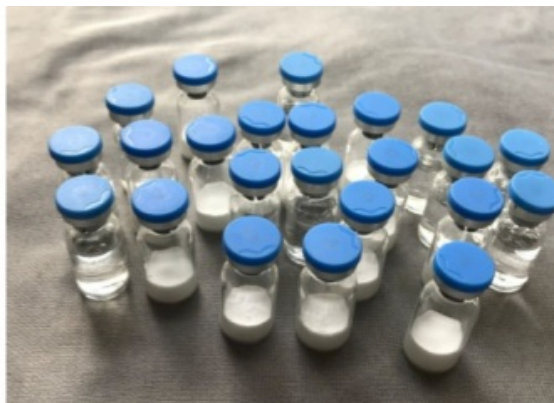
- Item: HKPao
- CAS No.: 859216-15-2
- Molecular Formula: C111H206N36O28S2
- Molecular Weight: 2557.18
- Storage Temp: Hunter-killer Peptide
- Specification: 10mg/vials,10vails /box
- Peptide Type: Synthetic Peptide



More Images



Product Description



What is HKPao?

HKPao refers to a specific type of hunter-killer peptide (HKP) that is designed to be used for therapeutic purposes, specifically to induce apoptosis (programmed cell death) against specific cell types. Hunter-killer peptides are chimeric synthetic peptides that consist of two main components: a homing domain and a pro-apoptotic domain.

HKPao, like other HKPs, utilizes these structural domains to selectively target and kill specific cells, making it a potential candidate for the treatment of cancer, mastocytosis, arthritis, and obesity by targeting angiogenic tumor cells, mastocytes, arthritic tissues, and adipose tissues, respectively.

Chemical Information:

Product Name:	HKPao
CAS No.:	859216-15-2
Molecular Formula:	C ₁₁₁ H ₂₀₆ N ₃₆ O ₂₈ S ₂
Molecular Weight:	2557.18
Sequence:	{d-Cys}-Lys-Gly-Gly-Arg-Ala-Lys-Asp-Cys-Gly-Gly-{d-(Lys-Leu-Ala-Lys-Leu-Ala-Lys)} ₂
Other names/Synonyms:	Hunter-killer peptide ao
Storage Temp:	Sealed storage, away from moisture and light, under -20°C

How does HKPao work?

HKPao utilizes the dual function of its homing and pro-apoptotic domains to selectively target and induce apoptosis in specific cell types.

Homing Structural Domain

Targeting specific cells: The homing domain of HKPao recognizes and binds to specific receptors or markers on the surface of target cells. For example, in the case of targeting angiogenic tumor cells, the homing domain may bind to integrins or other receptors that are overexpressed on the surface of tumor vascular endothelial cells, but rarely present in normal cells.

Receptor-mediated internalization: After binding to the target cell receptor, HKPao is internalized into the cell via receptor-mediated endocytosis. This process ensures that the peptide enters the specific cell it is designed to target.

Pre-Apoptotic Structural Domains

Mitochondrial Targeting: Upon entry into the cell, the pro-apoptotic domain of HKPao directs the peptide to the mitochondria. This domain is normally positively charged and amphiphilic and interacts with the mitochondrial membrane.

Membrane Disruption: The pro-apoptotic domain disrupts the mitochondrial membrane. This disruption is critical because it leads to mitochondrial swelling and loss of membrane integrity.

Induction of Apoptosis: Disruption of the mitochondrial membrane triggers a cascade of events leading to apoptosis. Cytochrome c and other pro-apoptotic factors are released from the mitochondria into the cell.

Benefits of HKPao

As with other hunting peptides, the benefits of HKPao are primarily related to its targeted therapeutic approach.

Precision Therapy

This selective approach allows for more precise treatment of diseases, especially cancer, as it distinguishes between healthy cells and tumor cells.

Effective induction of apoptosis

The pro-apoptotic domain effectively induces apoptosis by disrupting the mitochondrial membrane, leading to cell death. This mechanism efficiently kills the target cells.

Highly targeted

HKPao can be designed to target different cell types by altering the homing domain. This makes it versatile in treating different conditions such as cancer, mastocytosis, arthritis, and obesity. The ability to customize the homing domains for different receptors means that treatments can be tailored to specific diseases or even individual patients.

Anti-degradability

The use of the D-enantiomer amino acid in the pro-apoptotic domain makes HKPao resistant to protease degradation, ensuring that it remains active in the cell for a longer period, thus increasing its efficacy.

Product Images:



Shipping:

目的地	运单号	改单号	转单号	轨迹状态	轨迹说明
加拿大	20125595987063			签收	Delivered
加拿大	20125595986994			签收	Delivered
加拿大	20125595986890			转运中	Item processed
加拿大	20125595986892			上网	Item arrived
加拿大	20125595986937			转运中	Item processed
加拿大	20125595986790			签收	Delivered
加拿大	20125595985510			签收	Delivered
加拿大	20125595983740			签收	Delivered
加拿大	20125595983811			签收	Delivered to your community mailbox, parcel locker or apt./condo mailbox
加拿大	20125595985235			签收	Delivered
加拿大	20125595985163			转运中	Item in transit
加拿大	20125595983462			转运中	Item processed
加拿大	20125595983549			签收	Delivered
加拿大	20125595983509			上网	Item departed
加拿大	20125595979229			签收	Delivered
加拿大	20125595979188			签收	Delivered
加拿大	20125595979015			签收	Delivered to your community mailbox, parcel locker or apt./condo mailbox
加拿大	20125595977816			签收	Delivered
加拿大	20125595976371			签收	Delivered to recipient's delivery partner
加拿大	20125595976367			清关中	Item has been presented to Canada Border Services Agency for customs
加拿大	20125595974968			签收	Delivered
加拿大	20125595974764			签收	Delivered
加拿大	20125595974670			签收	Delivered
加拿大	20125595969816			签收	Delivered to your community mailbox, parcel locker or apt./condo mailbox
加拿大	20125595966882			签收	Delivered
加拿大	20125595964096			签收	Delivered
加拿大	20125595962803			签收	Delivered to your community mailbox, parcel locker or apt./condo mailbox
加拿大	20125595962791			签收	Delivered
加拿大	20125595961668			签收	Delivered to your community mailbox, parcel locker or apt./condo mailbox
加拿大	20125595961580			签收	Delivered to your community mailbox, parcel locker or apt./condo mailbox
加拿大	20125595961503			签收	Delivered
加拿大	20125595961519			签收	Delivered to your community mailbox, parcel locker or apt./condo mailbox
加拿大	20125595961518			签收	Delivered to your community mailbox, parcel locker or apt./condo mailbox
加拿大	20125595958859			签收	Delivered
加拿大	20125595958859			签收	Delivered to your community mailbox, parcel locker or apt./condo mailbox
加拿大	20125595958711			签收	Delivered
加拿大	20125595958687			签收	Delivered to your community mailbox, parcel locker or apt./condo mailbox
加拿大	20125595958622			签收	Delivered
加拿大	20125595958616			签收	Delivered to your community mailbox, parcel locker or apt./condo mailbox
加拿大	20125595958616			签收	Delivered to your community mailbox, parcel locker or apt./condo mailbox
加拿大	20125595958619			签收	Delivered to your community mailbox, parcel locker or apt./condo mailbox
加拿大	20125595957233			签收	Delivered



Shaanxi Hongbaiyi Biotech Co., Ltd.

☎ 18192109180

✉ tracy@sxhongbaiyi.com

🌐 peptide-powder.com

Hengjia Business Building, No.115 Weiyang Road, E&T Development Zone, Xi'an, Shaanxi, China.